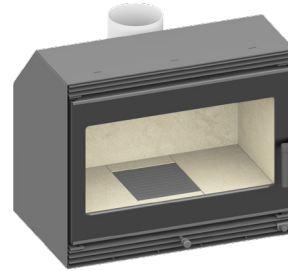


NEO-Line Kaso 650 - 5,9 kW

Overview

- Data sheet
- Side radiation area convective hot air according to EN16510-2-1
- Side radiation area convective hot air according to EN16510-2-2
- Dimensional drawings:
 - Basic model
 - Frame 3-sided 40 mm
 - Frame 3-sided 60 mm
 - Frame 3-sided 80 mm
 - Frame 4-sided 40 mm
 - Frame 4-sided 60 mm
 - Frame 4-sided 80 mm
- Product data sheet inkl. energy label



NEO-Line Kaso 650



NEO-Line Kaso 650 with Frame 4-sided 60 mm

NEO-Line Kaso 650 - 5,9 kW

Data sheet

Details

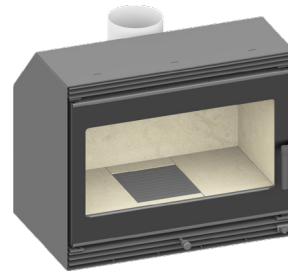
- Welser profile frame
- Inner lining vermiculite
- Hinged door, self-closing
- Interchangeable door hinge
- Glass: 1-section
- Adjustable feet adjustable through the combustion chamber
- Flue gas connector adjustable through the combustion chamber

Standard

- Combustion air connector 125 mm
- Flue gas connector 150 mm

Optional

- Convection fan
- Frames



NEO-Line Kaso 650



NEO-Line Kaso 650 with Frame 4-sided 60 mm



Energy efficiency
class in accordance
with (EU) 2015/1186



1. Federal Emissions
Control Ordinance
Stage 2



There may be modifications to technical details caused by ongoing developments;
subject to errors and omissions. Dated: 09/2025

NEO-Line Kaso 650 - 5,9 kW

Data sheet

Technical data

• Nominal heat output	5,9 kW
• Thermal output range ¹	---
• Efficiency	>80 %
• Insulation thickness (with a wall that does not need to be protected, based on TROL, Reference insulation material)	80 mm
• Insulation thickness (Combustible components based on TROL 2022)	WDS 2 - WDS 4 H
• Combustion air connector	Ø 125 mm
• Type of combustion air supply	VL _{Room} , VL _{External}
• Recommended length of logs	33 cm
• Weight	100 kg
• Heat distribution: through the viewing window	30 %
• Heat distribution: convective output	70 %
• Recommended free cross-section ²	Supply air 991 cm ² Recirculation air 826 cm ²

Data for chimney sweep according to DIN EN 133844
(closed operation)

Triple values with nominal heat output

• Flue gas mass flow	6,7 g/s
• Flue gas temperature	204 °C
• Required delivery pressure	12 Pa

¹ DThe thermal output range is dependent on the volume and quality of wood loaded. Only use the nominal heat output triple values to calculate the chimney.

² DThe calculation was calculated according to TROL 2022 - Chapter 7.2.3.1 Supply and recirculation air cross sections. Free cross section in cm² for grid or break-through tile based on the heat output for air heating. Supply air grille 240 cm²/kW, recirculation air grille 200 cm²/kW. The calculated values may be exceeded or fallen short of by up to 20%.

There may be modifications to technical details caused by ongoing developments; subject to errors and omissions. Dated: 09/2025



Energy efficiency class in accordance with (EU) 2015/1186

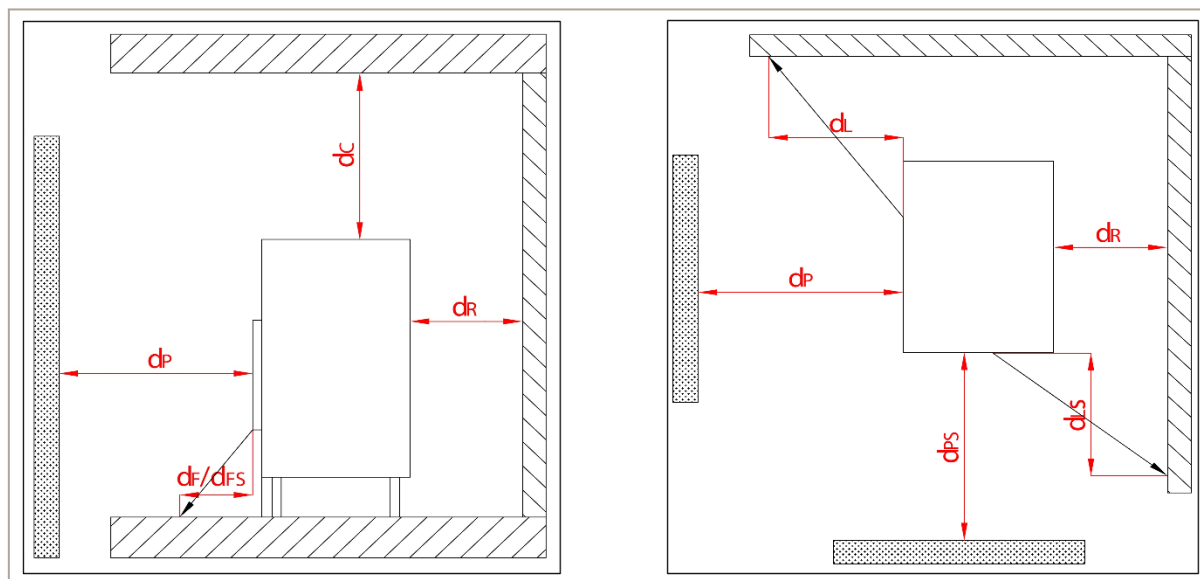


1. Federal Emissions Control Ordinance Stage 2



NEO-Line Kaso 650 - 5,9 kW

Side radiation area convective hot air according to EN16510-2-1

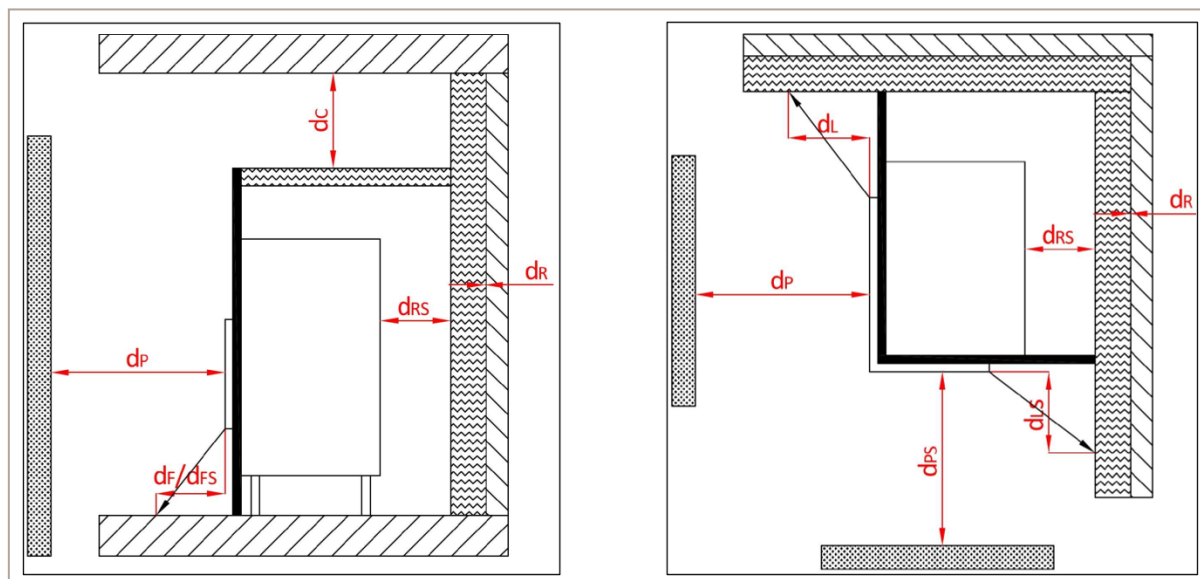


View from the side and from above

Minimum distance to combustible materials:	Abbr.	Fireplace cassette inserts:
		NEO-Line Kaso 650 - 5,9 kW
ceiling	d_c	> 750 mm
rear and side (between the insulation and the test wall)	d_r	200 mm
rear and side (between the insulation and the insert)	d_s	200 mm
side radiation area front glass	d_l	700 mm
side radiation area side glass	d_{ls}	0 mm
to adjacent combustible materials front glass	d_p	800 mm
to adjacent combustible materials side glass	d_{ps}	0 mm
distance on the floor to the front	d_f	0 mm
distance on the floor to the side	d_{fs}	0 mm

NEO-Line Kaso 650 - 5,9 kW

Side radiation area convective hot air according to EN16510-2-2



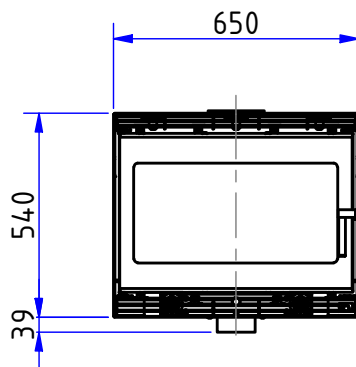
View from the side and from above

Minimum distance to combustible materials:	Abbr.	Fireplace cassette inserts:
		NEO-Line Kaso 650 - 5,9 kW
ceiling	d_c	> 750 mm
rear and side (between the insulation and the test wall)	d_r	0 mm
rear and side (between the insulation and the insert)	d_{rs}	60 mm
side radiation area front glass	d_L	700 mm
side radiation area side glass	d_{LS}	0 mm
to adjacent combustible materials front glass	d_P	800 mm
to adjacent combustible materials side glass	d_{PS}	0 mm
distance on the floor to the front	d_F	0 mm
distance on the floor to the side	d_{FS}	0 mm

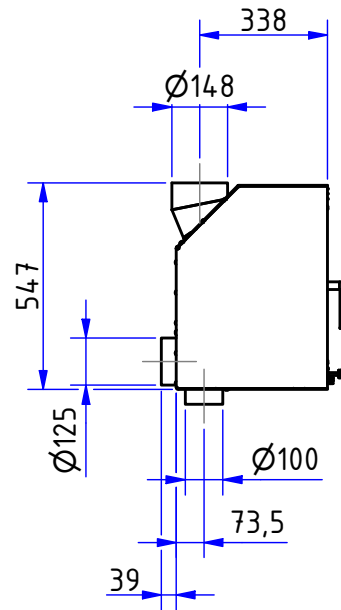
NEO-Line Kaso 650

Dimensional drawings

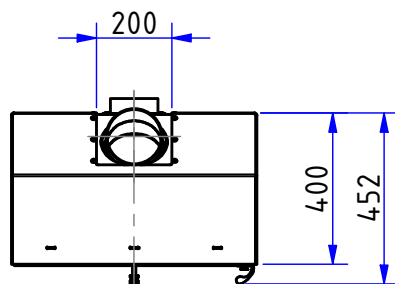
Front view, scale 1:20



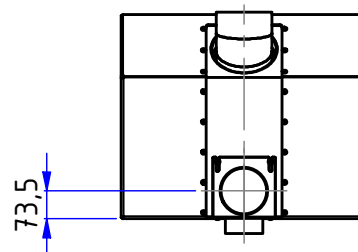
Side view, scale 1:20



Rear view, scale 1:20



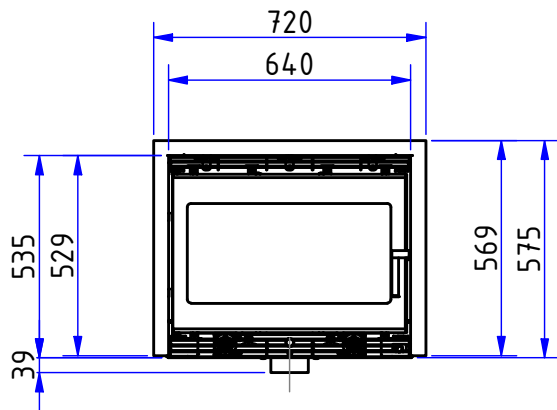
Top view, scale 1:20



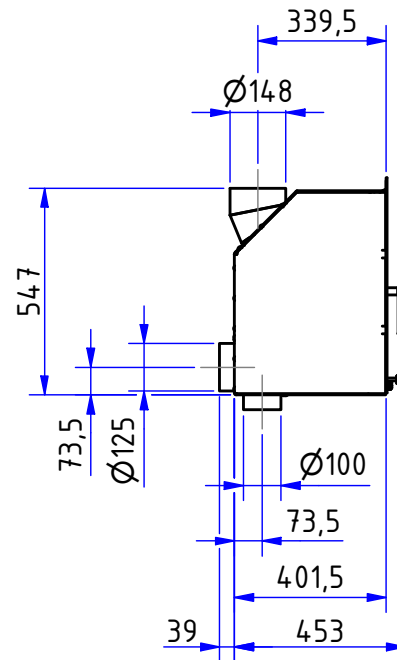
NEO-Line Kaso 650

Dimensional drawings with Frame 3-sided 40 mm

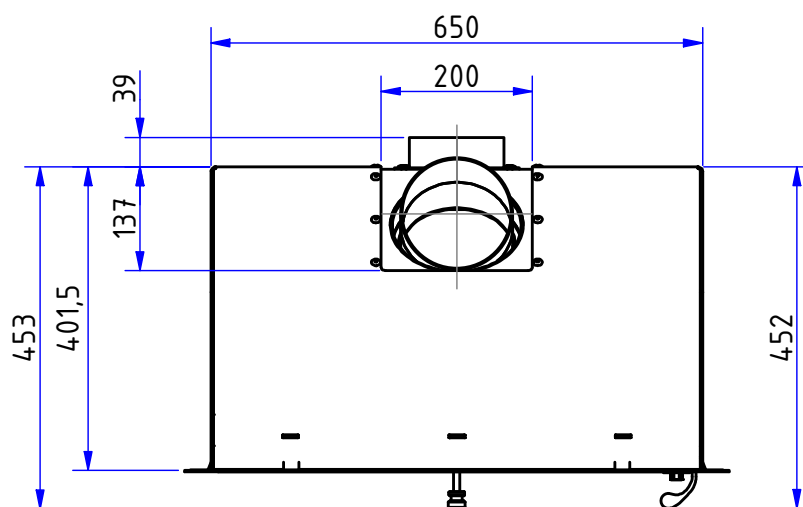
Front view, scale 1:20



Side view, scale 1:20

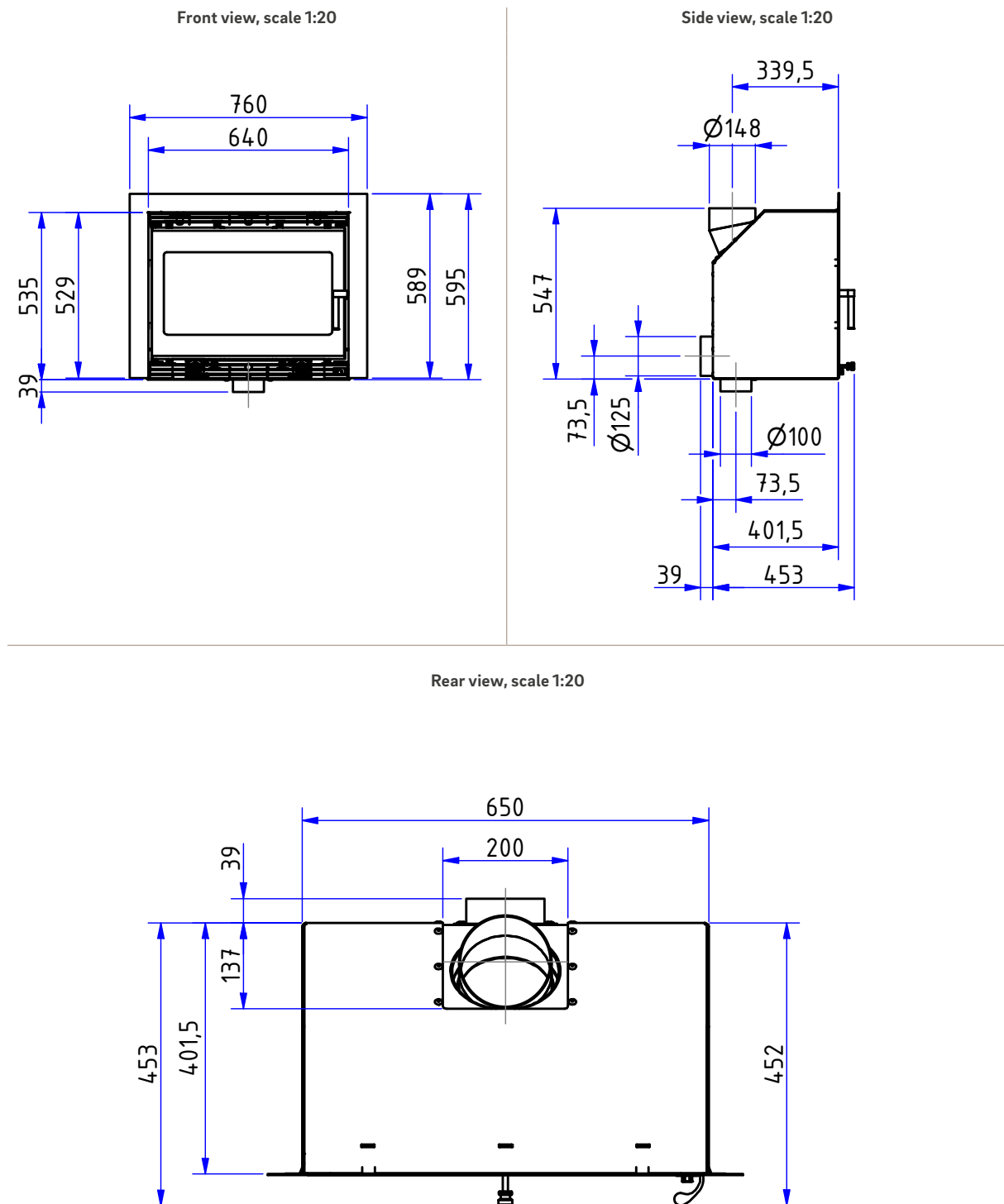


Rear view, scale 1:20



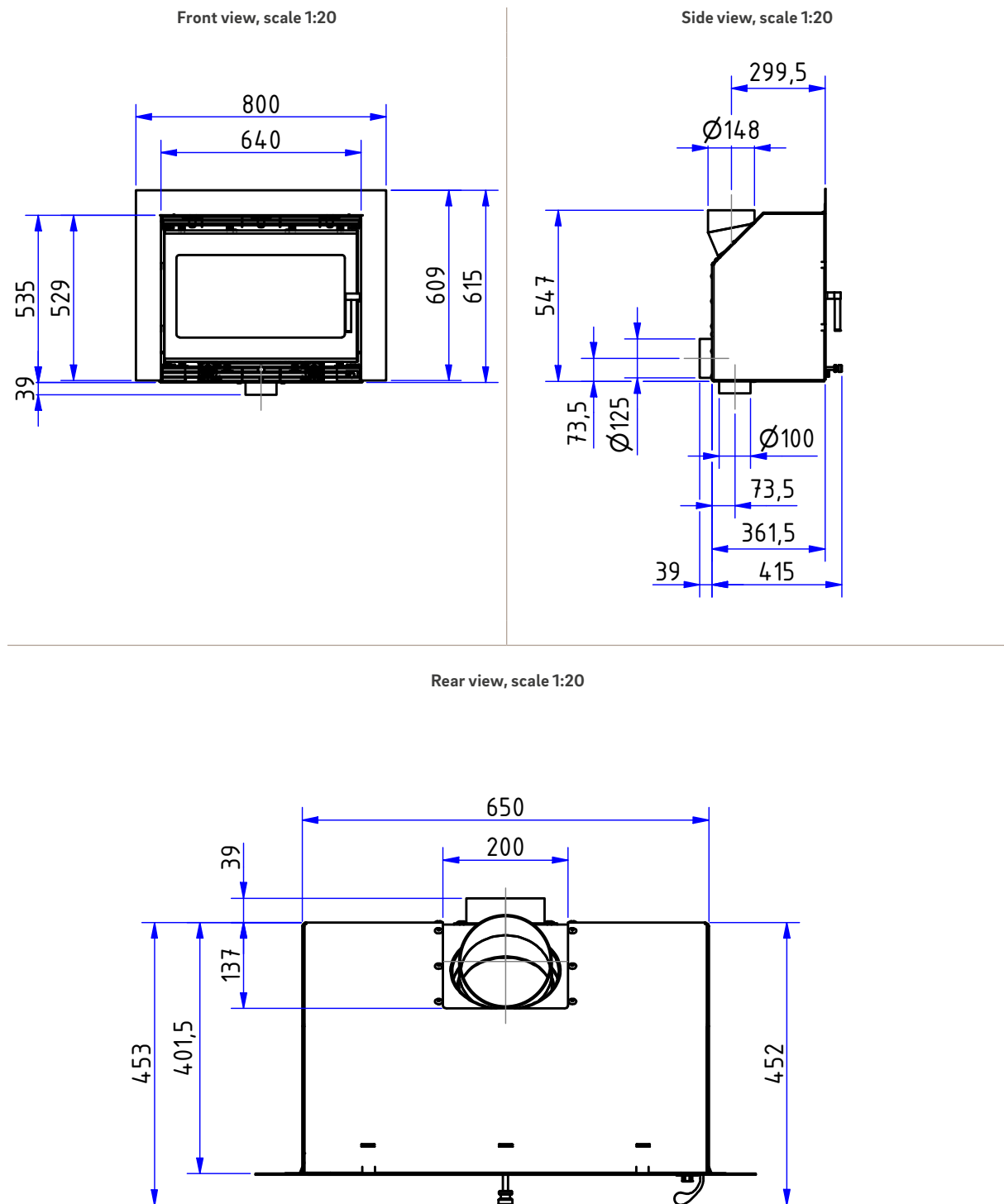
NEO-Line Kaso 650

Dimensional drawings with Frame 3-sided 60 mm



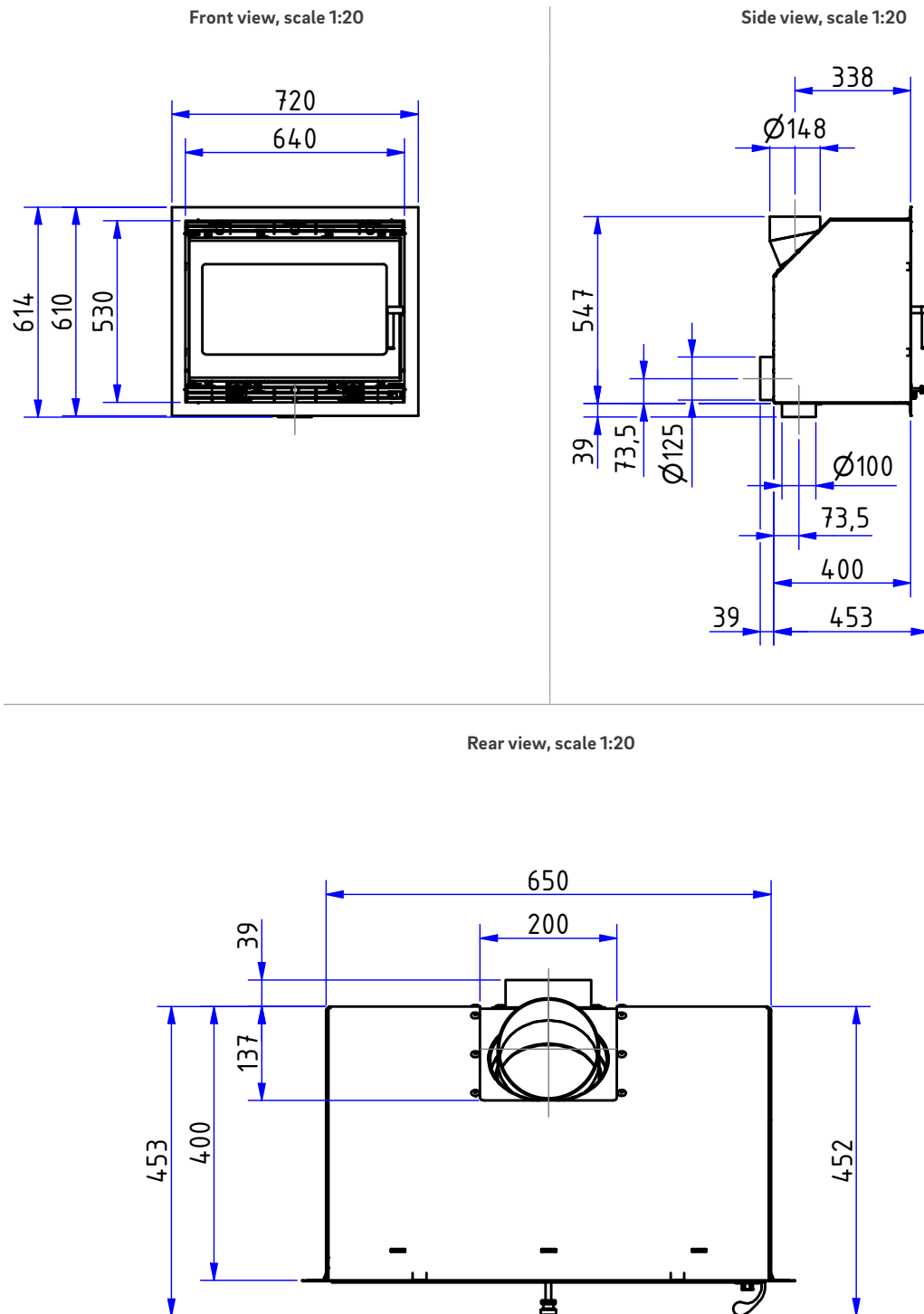
NEO-Line Kaso 650

Dimensional drawings with Frame 3-sided 80 mm



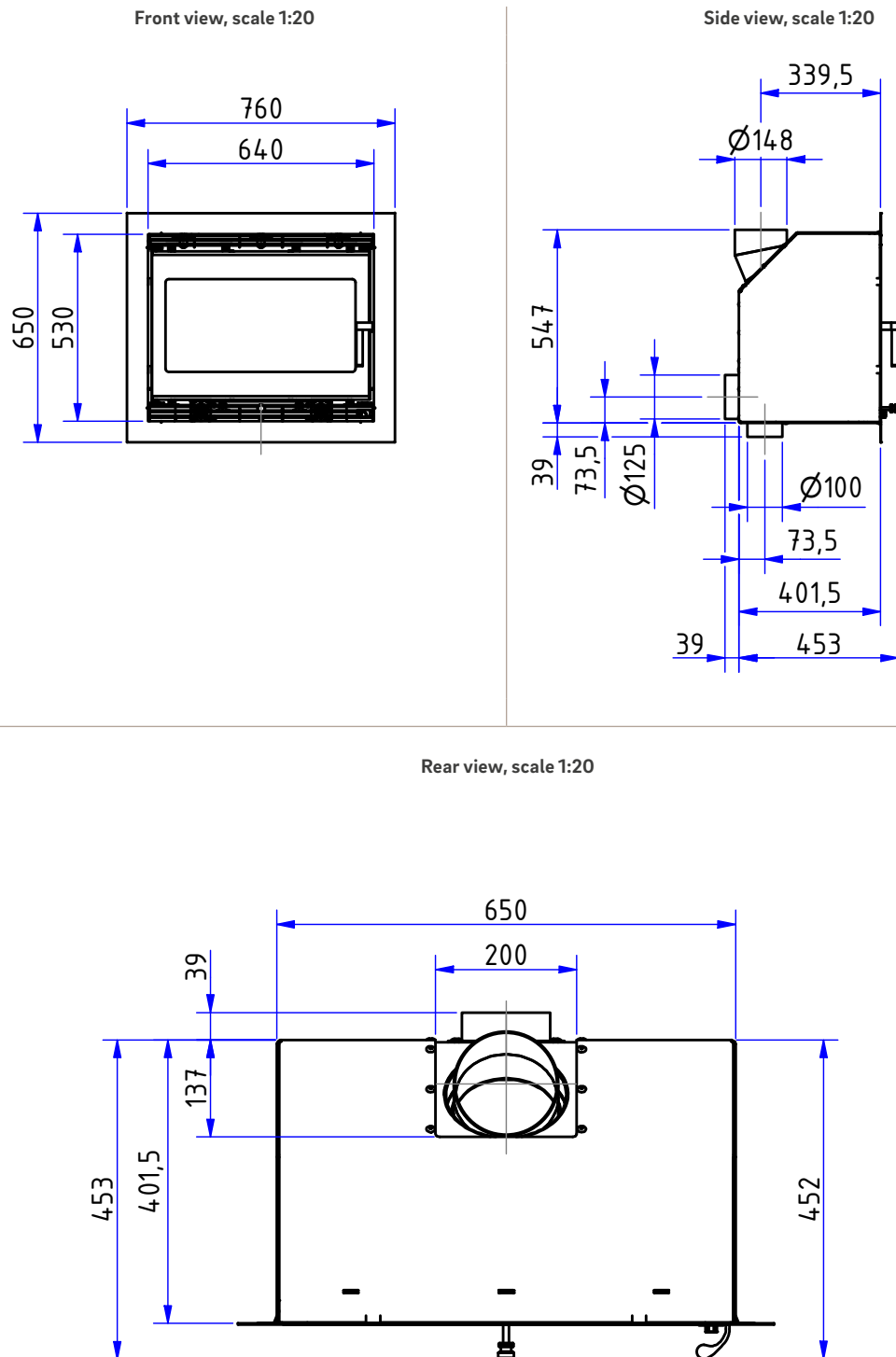
NEO-Line Kaso 650

Dimensional drawings with Frame 4-sided 40 mm



NEO-Line Kaso 650

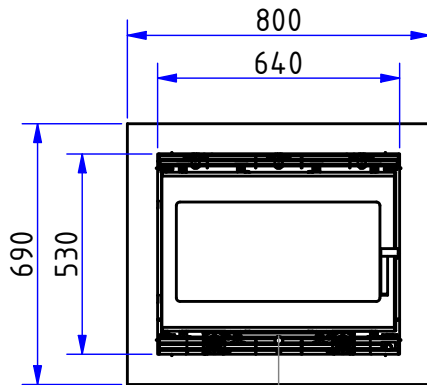
Dimensional drawings with Frame 4-sided 60 mm



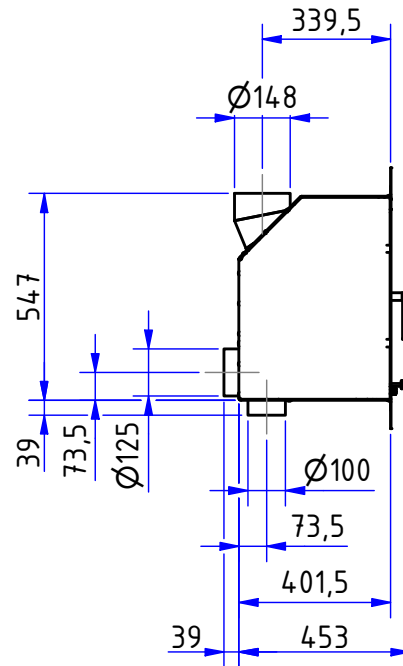
NEO-Line Kaso 650

Dimensional drawings with Frame 4-sided 80 mm

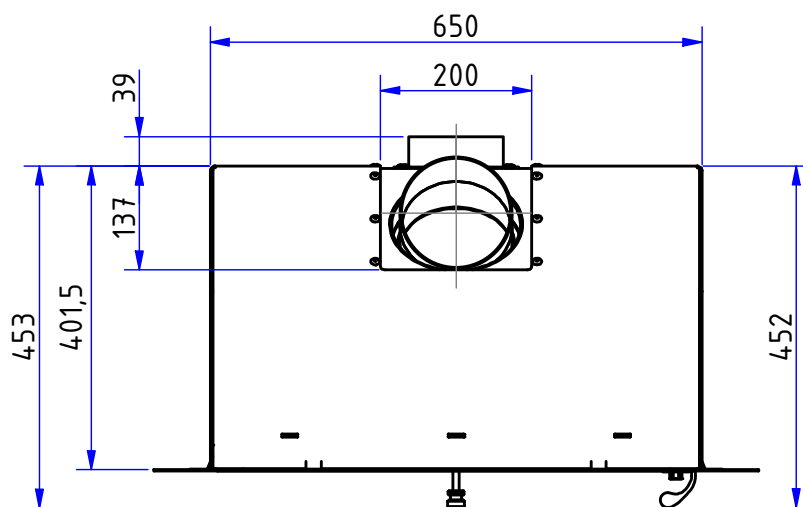
Front view, scale 1:20



Side view, scale 1:20



Rear view, scale 1:20



Product data sheet

Regulation (EU) 2015/1186 supplementing Directive 2010/30/EU

	NEO-Line Kaso 650
Supplier's name:	Camina & Schmid Feuerdesign und Technik GmbH & Co. KG
Supplier's model identifier:	NEO-Line Kaso 650
Energy efficiency class:	A
Direct heat output (kW)	5,9
Indirect heat output (kW):	–
Energy efficiency index (EEI):	107,0
Energy efficiency at nominal heat output (%):	80,7
Notes for specific precautions, installation or maintenance:	Please note the reference in the assembly instructions and operating manuals!

There may be modifications to technical details caused by ongoing developments; subject to errors and omissions. Dated: 08/2025

	NEO-Line Kaso 650
Room heat output (kW)	5,9
Partial load-thermal output (kW)	–
Partial load-room heat output (kW)	–
Efficiency partial load - thermal output (%)	–
Room heating annual efficiency at nominal heat output	70,7
CO - Emissions (13% O ₂) at nominal heat output (mg/m ³)	< 1250
NOX - Emissions (13% O ₂) at nominal heat output (mg/m ³)	< 200
OGC - Emissions (13% O ₂) at nominal heat output (mg/m ³)	< 120
Particles - Emissions (13% O ₂) at nominal heat output (mg/m ³)	< 40
Required delivery pressure at nominal heat output (Pa)	12
Required delivery pressure at partial load-thermal output (Pa)	–
Chimney designation according chimney standard	T 400
Suitable for continuous burning operation (CON) or part-time operation (INT)	INT
Minimum distance to combustible components based on TROL 2022	WDS 2 - WDS 4H
Maximum carrying capacity by chimney (kg)	100

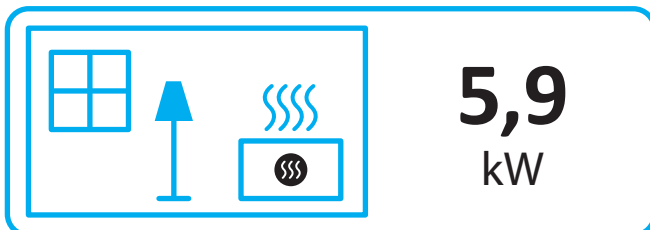
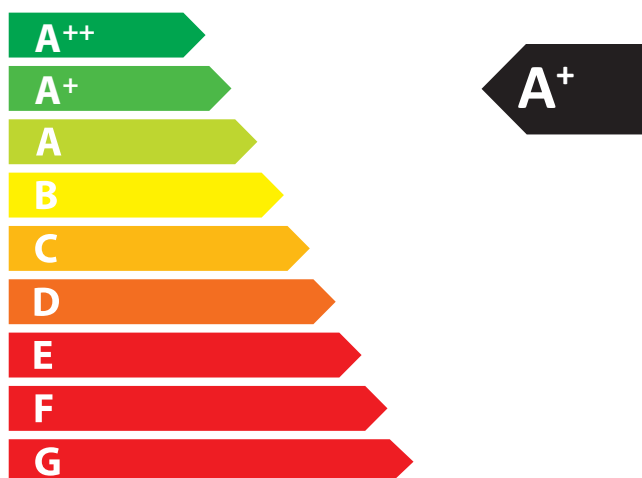
There may be modifications to technical details caused by ongoing developments; subject to errors and omissions. Dated: 08/2025



ENERG
енергия · ενέργεια



Camina  Schmid NEO-Line Kaso 650



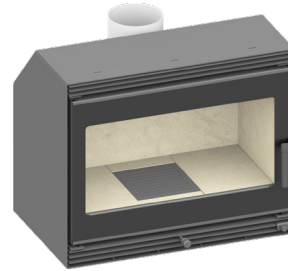
ENERGIA · ЕНЕРГИЯ · ΕΝΕΡΓΕΙΑ · ENERGIJA · ENERGY · ENERGIE · ENERGI

2015/1186

NEO-Line Kaso 650 - 6,9 kW

Overview

- Data sheet
- Side radiation area convective hot air according to EN16510-2-1
- Side radiation area convective hot air according to EN16510-2-2
- Dimensional drawings:
 - Basic model
 - Frame 3-sided 40 mm
 - Frame 3-sided 60 mm
 - Frame 3-sided 80 mm
 - Frame 4-sided 40 mm
 - Frame 4-sided 60 mm
 - Frame 4-sided 80 mm
- Product data sheet inkl. energy label



NEO-Line Kaso 650



NEO-Line Kaso 650 with Frame 4-sided 60 mm

NEO-Line Kaso 650 - 6,9 kW

Data sheet

Details

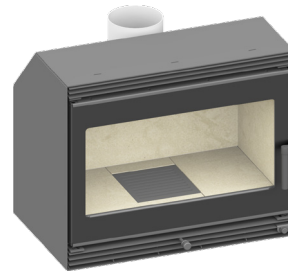
- Welser profile frame
- Inner lining vermiculite
- Hinged door, self-closing
- Interchangeable door hinge
- Glass: 1-section
- Adjustable feet adjustable through the combustion chamber
- Flue gas connector adjustable through the combustion chamber

Standard

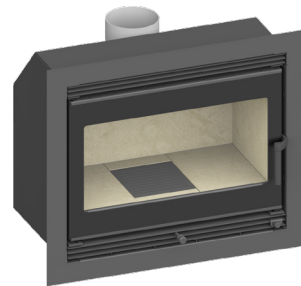
- Combustion air connector 125 mm
- Flue gas connector 150 mm

Optional

- Convection fan
- Frames



NEO-Line Kaso 650



NEO-Line Kaso 650 with Frame 4-sided 60 mm



Energy efficiency
class in accordance
with (EU) 2015/1186



1. Federal Emissions
Control Ordinance
Stage 2



There may be modifications to technical details caused by ongoing developments;
subject to errors and omissions. Dated: 09/2025

NEO-Line Kaso 650 - 6,9 kW

Data sheet

Technical data

• Nominal heat output	6,9 kW
• Thermal output range ¹	---
• Efficiency	>80 %
• Insulation thickness (with a wall that does not need to be protected, based on TROL, Reference insulation material)	80 mm
• Insulation thickness (Combustible components based on TROL 2022)	WDS 2 - WDS 4 H
• Combustion air connector	Ø 125 mm
• Type of combustion air supply	VL _{Room} , VL _{External}
• Recommended length of logs	33 cm
• Weight	100 kg
• Heat distribution: through the viewing window	30 %
• Heat distribution: convective output	70 %
• Recommended free cross-section ²	Supply air 1159 cm ² Recirculation air 966 cm ²

Data for chimney sweep according to DIN EN 133844
(closed operation)

Triple values with nominal heat output

• Flue gas mass flow	7,1 g/s
• Flue gas temperature	224 °C
• Required delivery pressure	12 Pa

¹ DThe thermal output range is dependent on the volume and quality of wood loaded. Only use the nominal heat output triple values to calculate the chimney.

² DThe calculation was calculated according to TROL 2022 - Chapter 7.2.3.1 Supply and recirculation air cross sections. Free cross section in cm² for grid or break-through tile based on the heat output for air heating. Supply air grille 240 cm²/kW, recirculation air grille 200 cm²/kW. The calculated values may be exceeded or fallen short of by up to 20%.

There may be modifications to technical details caused by ongoing developments; subject to errors and omissions. Dated: 09/2025



Energy efficiency class in accordance with (EU) 2015/1186

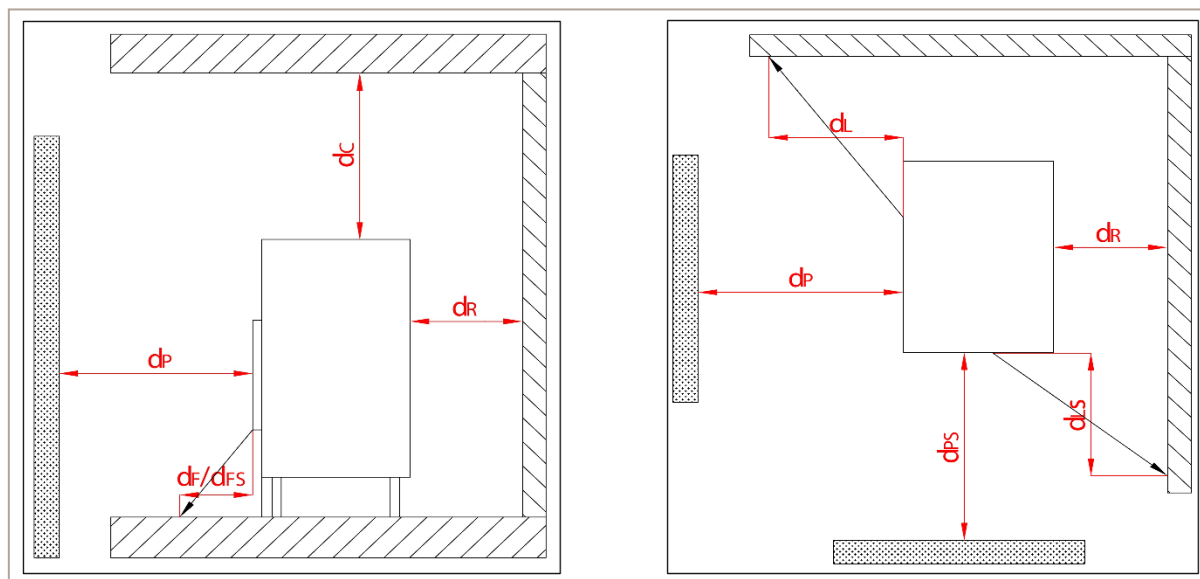


1. Federal Emissions Control Ordinance Stage 2



NEO-Line Kaso 650 - 6,9 kW

Side radiation area convective hot air according to EN16510-2-1

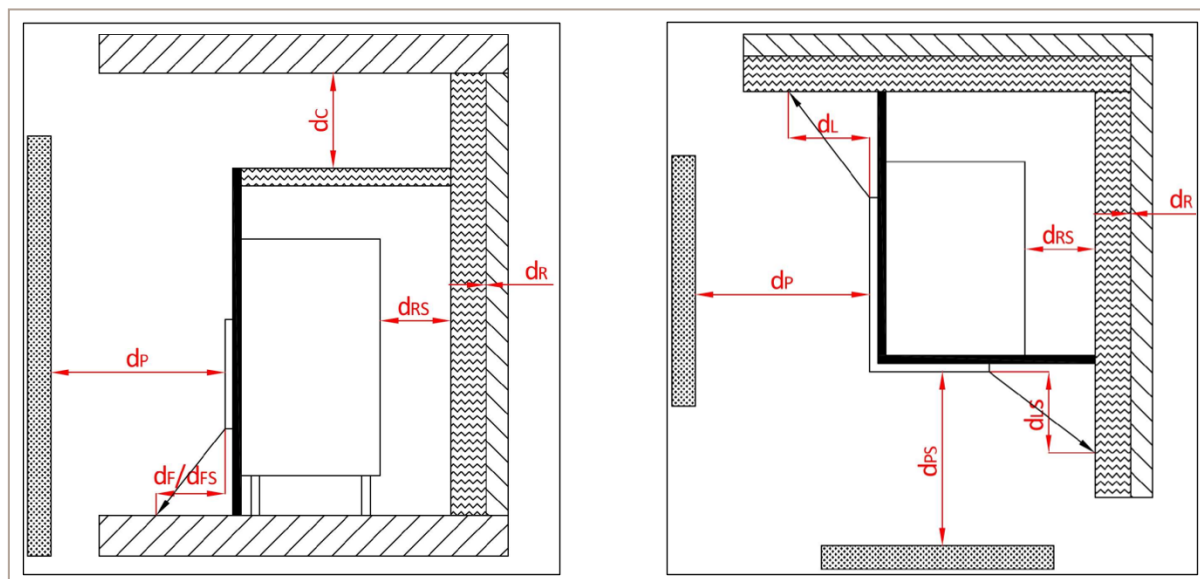


View from the side and from above

Minimum distance to combustible materials:	Abbr.	Fireplace cassette inserts:
		NEO-Line Kaso 650 -6,9 kW
ceiling	d_c	> 750 mm
rear and side (between the insulation and the test wall)	d_r	200 mm
rear and side (between the insulation and the insert)	d_s	200 mm
side radiation area front glass	d_l	700 mm
side radiation area side glass	d_{ls}	0 mm
to adjacent combustible materials front glass	d_p	800 mm
to adjacent combustible materials side glass	d_{ps}	0 mm
distance on the floor to the front	d_f	0 mm
distance on the floor to the side	d_{fs}	0 mm

NEO-Line Kaso 650 - 6,9 kW

Side radiation area convective hot air according to EN16510-2-2



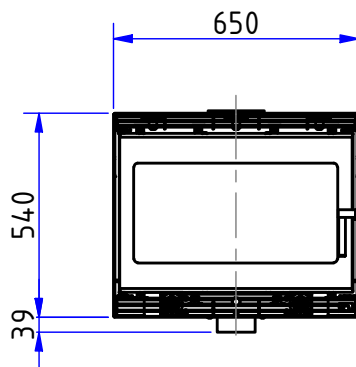
View from the side and from above

Minimum distance to combustible materials:	Abbr.	Fireplace cassette inserts:
		Kaso 650 - 6,9 kW
ceiling	d_c	> 750 mm
rear and side (between the insulation and the test wall)	d_r	0 mm
rear and side (between the insulation and the insert)	d_{rs}	70 mm
side radiation area front glass	d_L	700 mm
side radiation area side glass	d_{LS}	0 mm
to adjacent combustible materials front glass	d_p	800 mm
to adjacent combustible materials side glass	d_{PS}	0 mm
distance on the floor to the front	d_F	0 mm
distance on the floor to the side	d_{FS}	0 mm

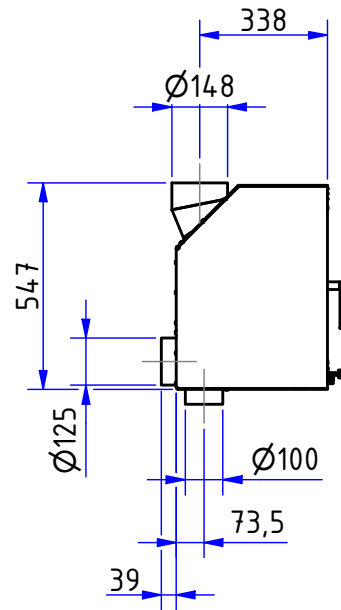
NEO-Line Kaso 650

Dimensional drawings

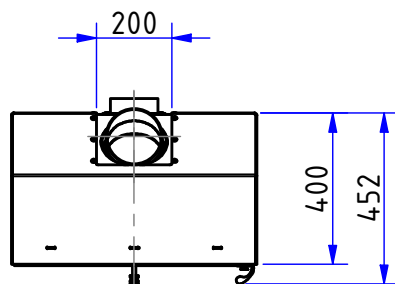
Front view, scale 1:20



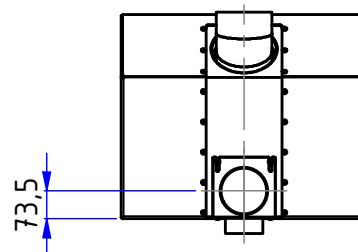
Side view, scale 1:20



Rear view, scale 1:20



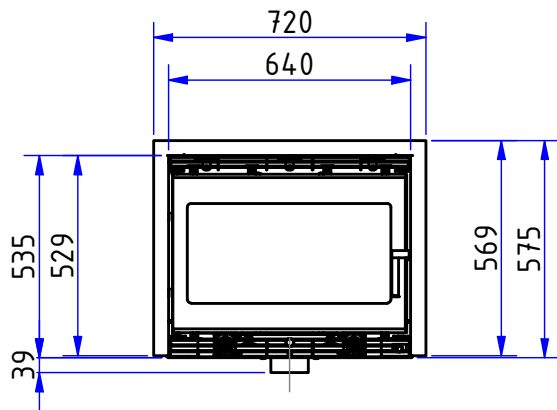
Top view, scale 1:20



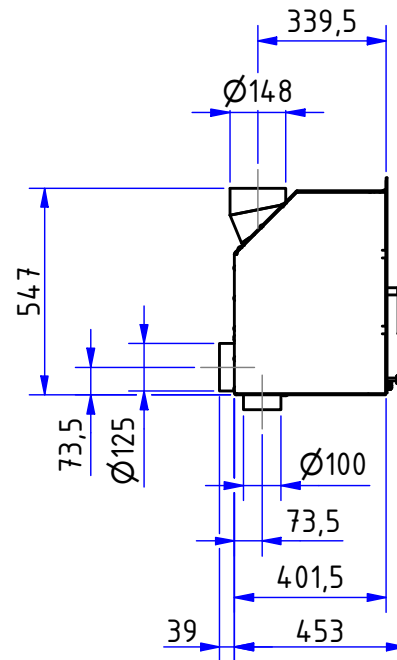
NEO-Line Kaso 650

Dimensional drawings with Frame 3-sided 40 mm

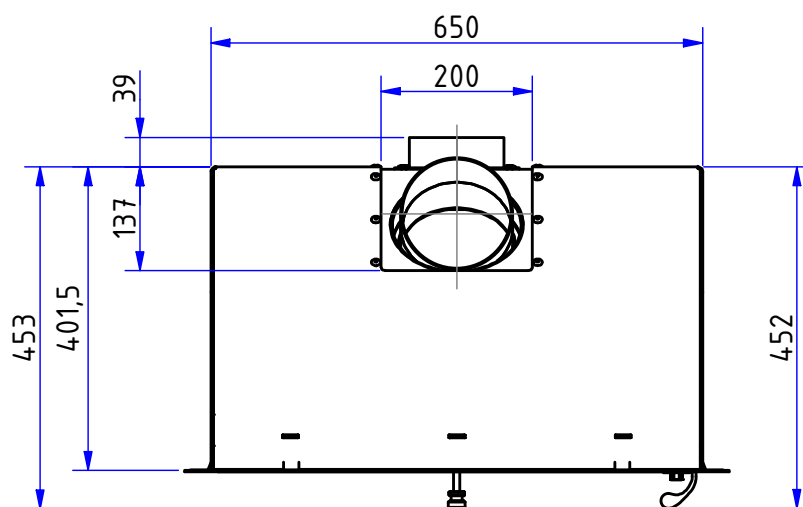
Front view, scale 1:20



Side view, scale 1:20

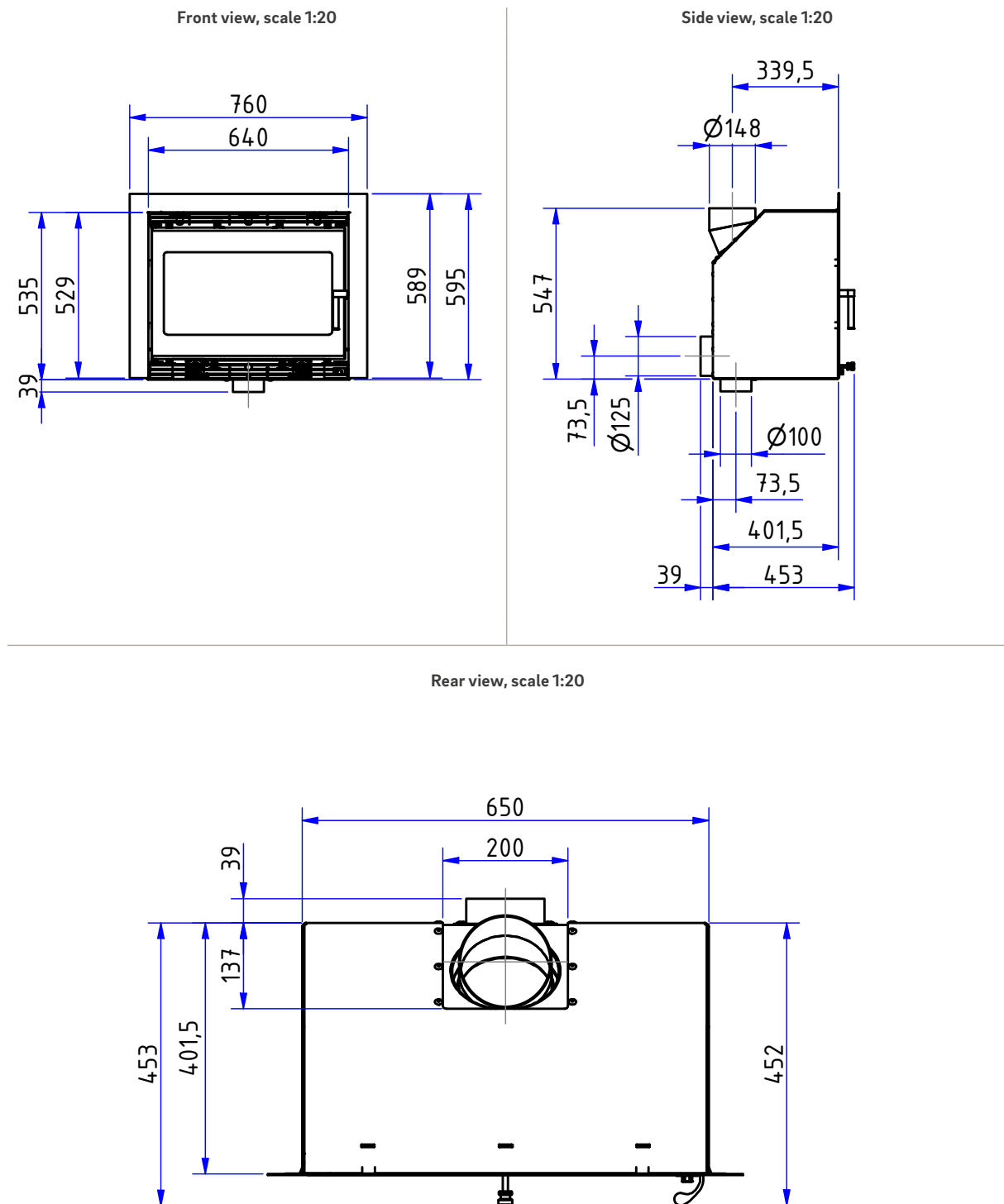


Rear view, scale 1:20



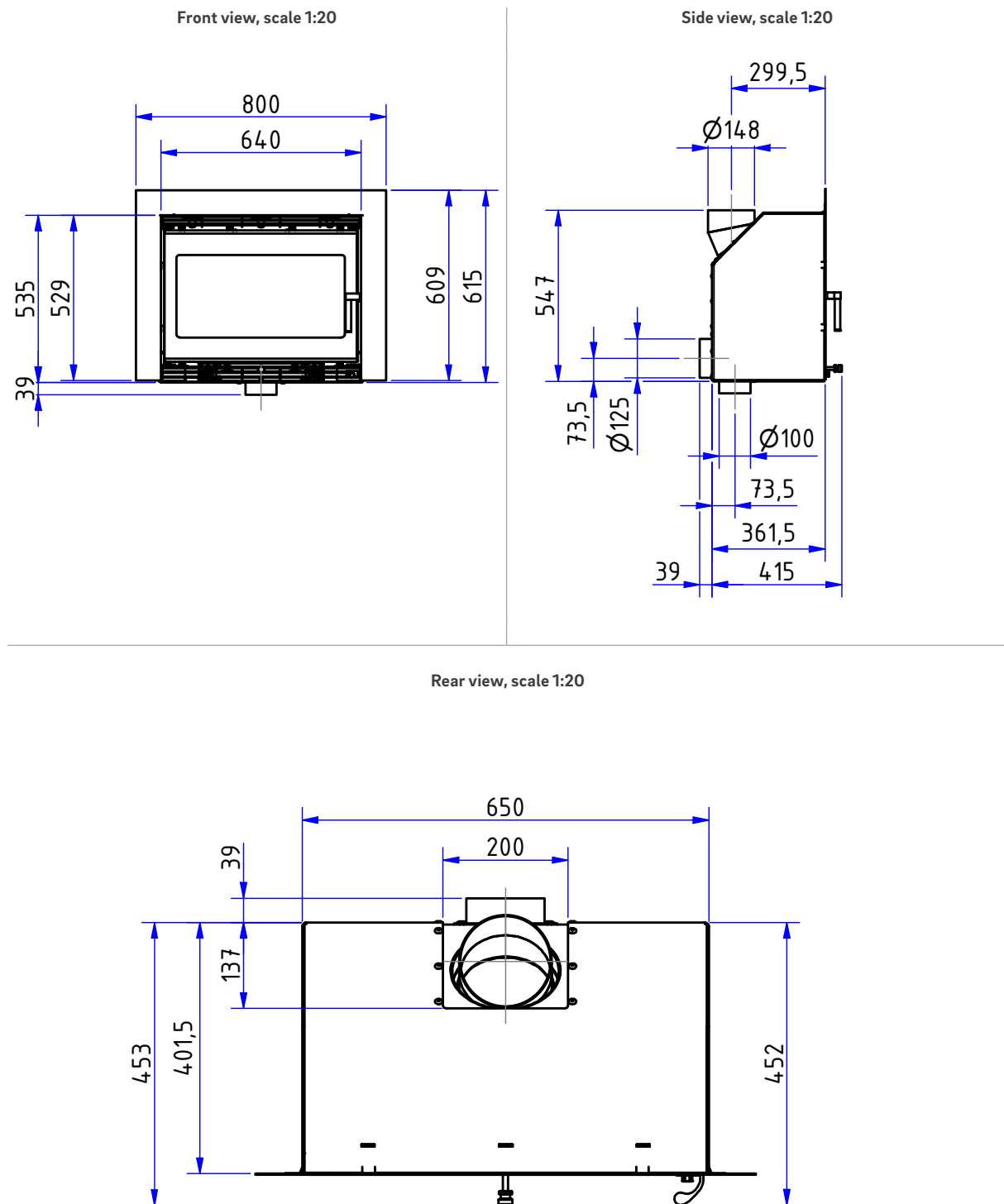
NEO-Line Kaso 650

Dimensional drawings with Frame 3-sided 60 mm



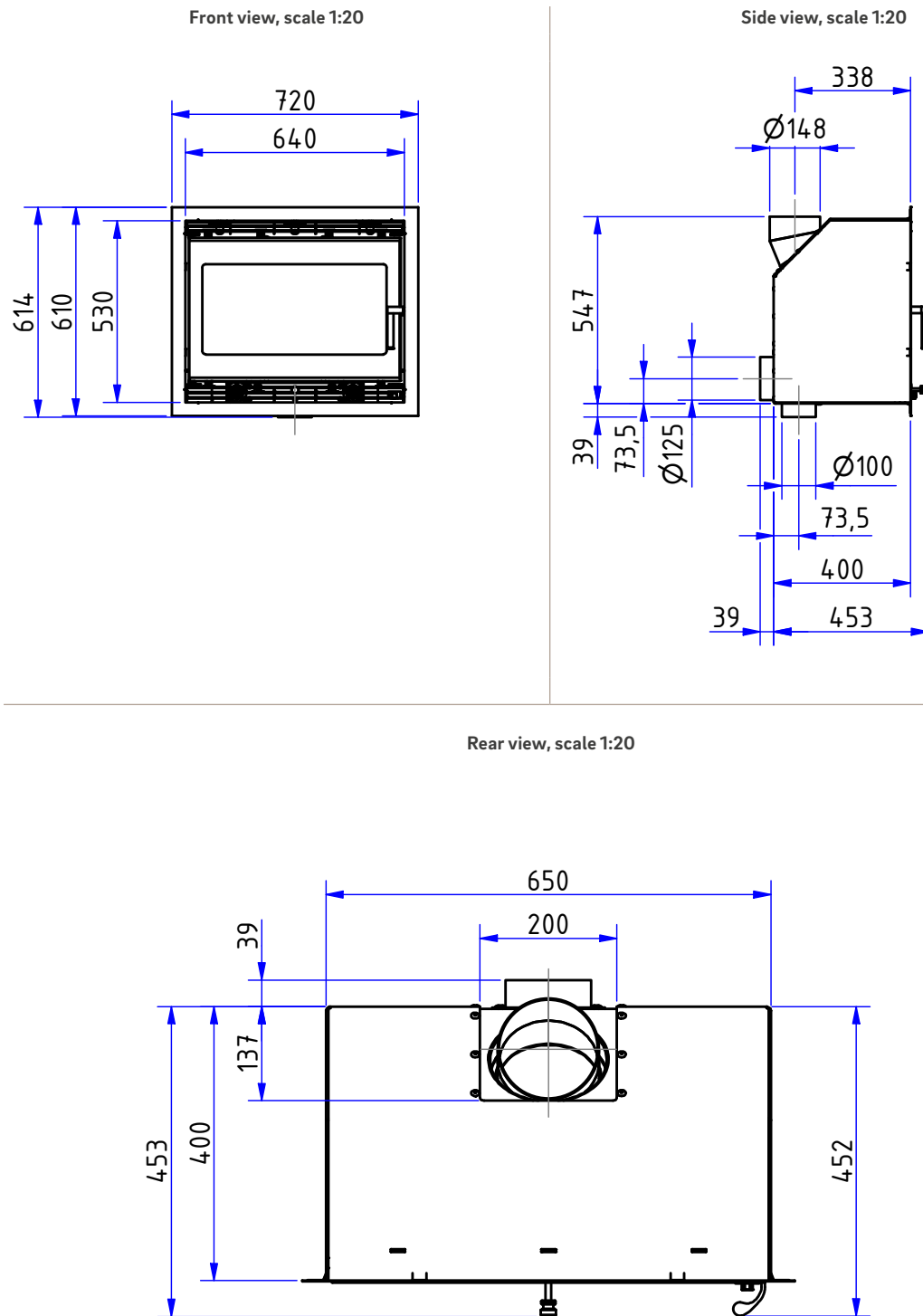
NEO-Line Kaso 650

Dimensional drawings with Frame 3-sided 80 mm



NEO-Line Kaso 650

Dimensional drawings with Frame 4-sided 40 mm

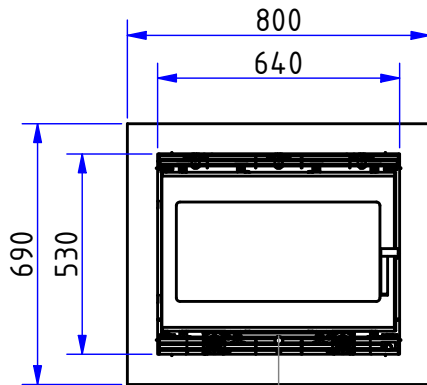


Illustrations are similar. All photos and drawings are protected by copyright. Usage or publication, even of individual details, is only permitted with our authorisation. There may be modifications to the colour and technical details caused by ongoing developments; subject to errors and omissions. Dated: 09/2025

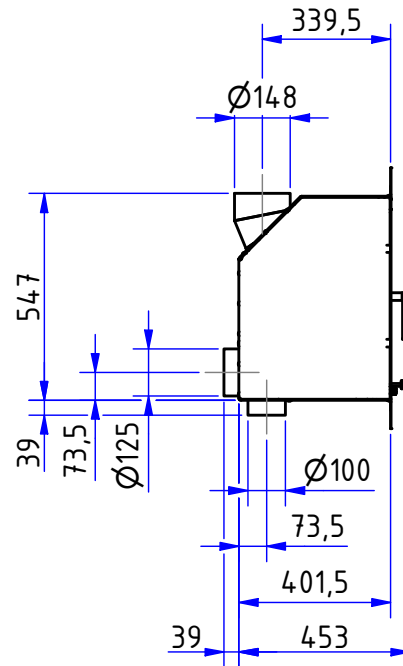
NEO-Line Kaso 650

Dimensional drawings with Frame 4-sided 80 mm

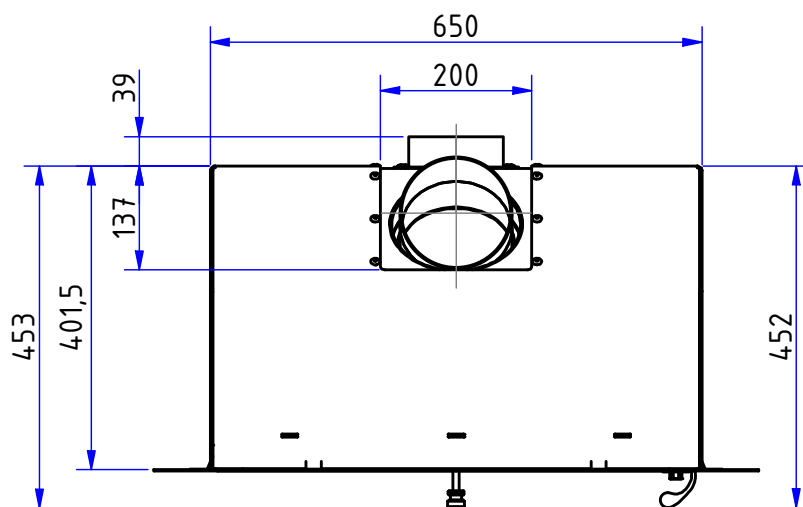
Front view, scale 1:20



Side view, scale 1:20



Rear view, scale 1:20



Product data sheet

Regulation (EU) 2015/1186 supplementing Directive 2010/30/EU

	NEO-Line Kaso 650
Supplier's name:	Camina & Schmid Feuerdesign und Technik GmbH & Co. KG
Supplier's model identifier:	NEO-Line Kaso 650
Energy efficiency class:	A
Direct heat output (kW)	6,9
Indirect heat output (kW):	–
Energy efficiency index (EEI):	106,3
Energy efficiency at nominal heat output (%):	80,2
Notes for specific precautions, installation or maintenance:	Please note the reference in the assembly instructions and operating manuals!

There may be modifications to technical details caused by ongoing developments; subject to errors and omissions. Dated: 08/2025

	NEO-Line Kaso 650
Room heat output (kW)	6,9
Partial load-thermal output (kW)	–
Partial load-room heat output (kW)	–
Efficiency partial load - thermal output (%)	–
Room heating annual efficiency at nominal heat output	70,2
CO - Emissions (13% O ₂) at nominal heat output (mg/m ³)	< 1250
NOX - Emissions (13% O ₂) at nominal heat output (mg/m ³)	< 200
OGC - Emissions (13% O ₂) at nominal heat output (mg/m ³)	< 120
Particles - Emissions (13% O ₂) at nominal heat output (mg/m ³)	< 40
Required delivery pressure at nominal heat output (Pa)	12
Required delivery pressure at partial load-thermal output (Pa)	–
Chimney designation according chimney standard	T 400
Suitable for continuous burning operation (CON) or part-time operation (INT)	INT
Minimum distance to combustible components based on TROL 2022	WDS 2 - WDS 4H
Maximum carrying capacity by chimney (kg)	100

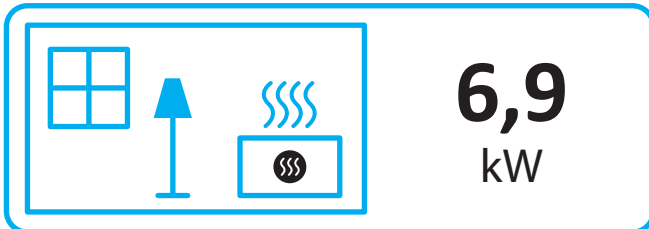
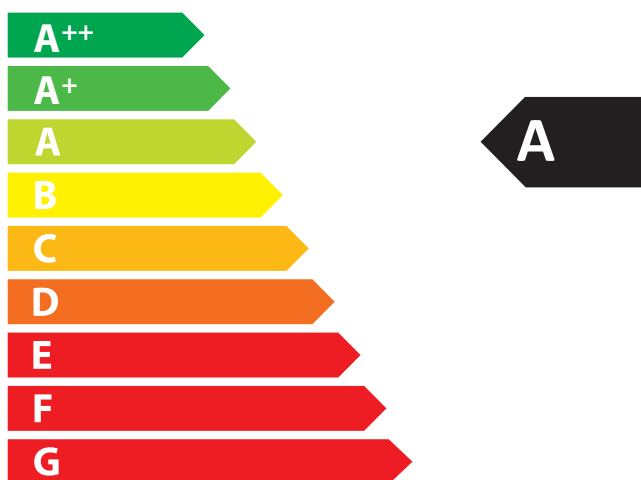
There may be modifications to technical details caused by ongoing developments; subject to errors and omissions. Dated: 08/2025



ENERG
енергия · ενέργεια



Camina  Schmid NEO-Line Kaso 650



ENERGIA · ЕНЕРГИЯ · ΕΝΕΡΓΕΙΑ · ENERGIJA · ENERGY · ENERGIE · ENERGI

2015/1186