

- Double-glazed door front
- Suitable for multiple flue connections
- Inner lining (refractory lining) can be replaced through the fire door
- Equipped with 2 transportation wheels at the back for easy installation.
- For extensive and wise accessory see price list

Optional comfort features



Outside air connector



SMS - Mini



SMS



Tube door



Water technology



Reheater box



Ceramic flue heat exchanger

SD 6 F Mixed firing

Specifications

Rated thermal output	kW	6
Output range (depending on the fuel quantity)	kW	3,2 - 7,1
Efficiency	%	81,1
Insulation rear / side walls	mm	80 / 80
Ø Supply air line for external air connection	mm	---
Weight incl. refractories	kg	150
Heat emission through glass	%	10
Convective heat	%	90

Data for chimney sweepers or responsible authority according to DIN EN 13384

Closed operation: A1

Triple value for NWL	Flue gas mass flow	g/s wood	8,6
		g/s BKB	8,7
	Flue gas temperature down- stream of reheater element	°C wood	260
		°C BKB	270
Required draught at flue gas connector	mbar wood	0,14	
	mbar BKB	0,12	

Triple value for calculation of the ceramic channels	Wood quantity	kg/h	3,5
	*Firing power	kW	11,2
	*Flue gas mass flow	g/s	14,0
	*Flue gas temperature before the secondary unit area	°C	504
	*Necessary conveying pressu- re at the flue gas connector	mbar	0,15
	*Combustion air requirements	m³/h	31,9

* in relation to the wood quantity

Tested method DIN EN 13229
and in accordance with Regulation Art. 15a B-VG

Testing report nr.: RRF - 29 06 1053



- 1. BlmSchV. level 1
- 1. BlmSchV. level 2

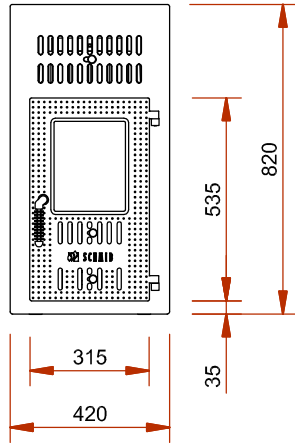


More informations:

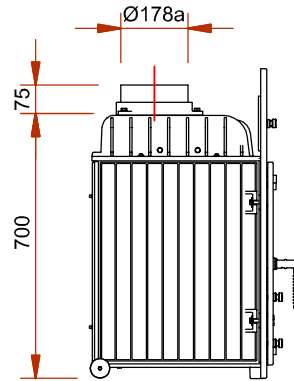
SD 6 F

Mixed firing

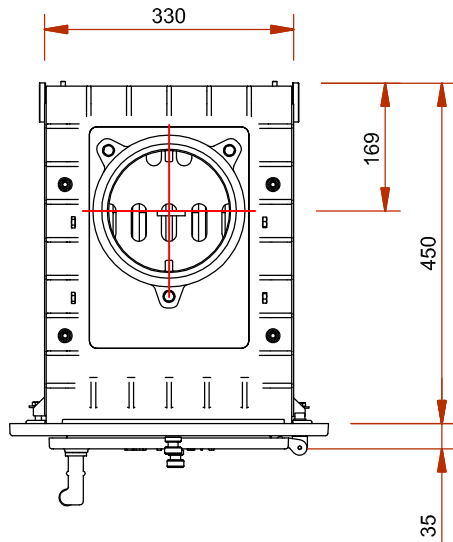
Front view M 1:20



Side view M 1:20



Top view M 1:10



Inner lining

